

PHILIPPINE SAVINGS BANK



KEY INFORMATION AND INVESTMENT DISCLOSURES STATEMENT

June 28, 2019

FUND FACTS

Classification: Money Market	Net Asset Value per Unit (NAVPU)¹: 110.152301
Launch Date: January 2, 2014	Total Fund NAV (in Php Bn) : 1.07
Minimum Investment: Php 10,000.00	Dealing Day: Banking day until 1:30 PM
Additional Subscription: Php 5,000.00	Redemption Settlement: Next banking day from date of redemption
Minimum Redemption: Php 5,000.00	
Minimum Holding Period: 30 calendar days	Early Redemption Charge: 1.00% for 1-15 days and 0.50% for 16-30 days of Redemption proceeds for all subscriptions held for less than thirty (30) days

FEES*

Trustee Fees: 0.50% p.a. based on NAV Philippine Savings Bank	Custodianship Fee: Minimum monthly of \$250 or its peso equivalent HSBC	External Auditor Fees: 0.007% SGV	Other Fees: Other Fees: 0.00%
---	---	---	--

*As percentage of average daily NAV for the quarter valued at 1,072,601,967.78

INVESTMENT OBJECTIVE AND STRATEGY

To achieve liquidity and generate income for its participants by investing in a diversified portfolio of short-term Philippine peso denominated fixed income instruments with a portfolio duration of not more than one (1) year. The Fund aims to outperform its benchmark, the Philippine 91-day Treasury Bills.

CLIENT SUITABILITY

A client profiling process should be performed prior to participating in the Fund to guide the prospective investor if the Fund is suited to his/her investment objectives and risk tolerance. Clients are advised to read the Declaration of Trust Fund Rules of the Fund, which may be obtained from the Trustee, before deciding to invest.

Suitable for individual and corporate investors with moderately conservative risk appetite.

KEY RISKS AND RISK MANAGEMENT

Investment in UITF exposes the investors to various types of risks including but not limited to:

- **Interest Rate Risk** : This is the possibility for an investor to experience losses due to changes in interest rates. The purchase and sale of a debt instrument may result in profit or loss because the value of a debt instrument changes inversely with prevailing interest rates.
- **Market/Price Risk** : This is the possibility for an investor to experience losses due to changes in market prices of securities (e.g., bonds and equities). It is the exposure to the uncertain market value of a portfolio due to price fluctuations.
- **Liquidity Risk** : This is the possibility for an investor to experience losses due to the inability to sell or convert assets into cash immediately or in instances where conversion to cash is possible but at a loss.
- **Credit Risk/Default Risk** : This is the possibility for an investor to experience losses due to a borrower's failure to pay principal and/or interest in a timely manner on instruments such as bonds, loans, or other forms of security which the borrower issued.
- **Reinvestment Risk** : This is the risk associated with the possibility of having lower returns or earnings when maturing funds or the interest earnings of funds are reinvested.
- **Other Risk** : Your participation in the UITFs may be further exposed to the risk of any actual or potential conflicts of interest in the handling of in-house or related party.

PSBank Money Market Fund uses a defined Risk Management policy in identifying and measuring level of risks. The Fund uses weighted modified duration in evaluating market risk for investment in fixed income securities. Modified Duration measures the approximate sensitivity of the value of the security to changes in interest rates. Interest rates have an adverse relationship with fixed income security prices so that an increase in interest rates generally leads to decrease in fixed income prices and vice versa. The higher the duration of an instrument, the higher its risk (considering all other factors are equal).

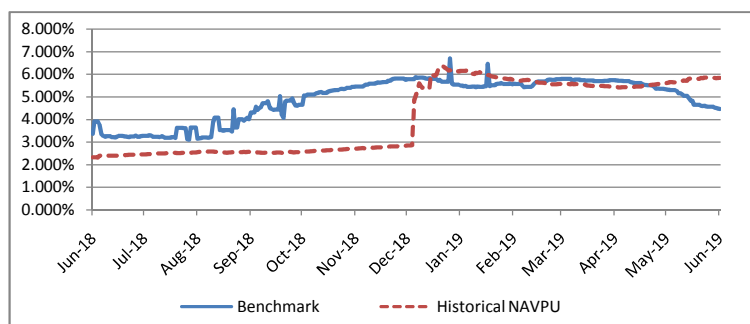
- THE UITF FUND IS NOT A DEPOSIT AND IS NOT INSURED BY THE PHILIPPINE DEPOSIT INSURANCE CORPORATION (PDIC)
- RETURNS CANNOT BE GUARANTEED AND HISTORICAL NAVPU IS FOR ILLUSTRATION OF NAVPU MOVEMENTS/FLUCTUATIONS ONLY
- WHEN REDEEMING, THE PROCEEDS MAY BE WORTH LESS THAN THE ORIGINAL INVESTMENT AND ANY LOSSES WILL BE SOLELY FOR THE ACCOUNT OF THE CLIENT.
- THE TRUSTEE IS NOT LIABLE FOR ANY LOSS UNLESS UPON WILLFUL DEFAULT, BAD FAITH OR GROSS NEGLIGENCE
- THE INVESTOR MUST READ THE COMPLETE DETAILS OF THE FUND IN THE PLAN RULES, MAKE HIS/HER OWN RISK ASSESSMENT, AND WHEN NECESSARY, HE/SHE MUST SEEK INDEPENDENT/PROFESSIONAL OPINION, BEFORE MAKING AN INVESTMENT

FUND PERFORMANCE AND STATISTICS AS OF JUNE 28, 2019

(Purely for reference purposes and is not a guarantee of future results)

Graph

KEY INFORMATION AND INVESTMENT DISCLOSURES STATEMENT

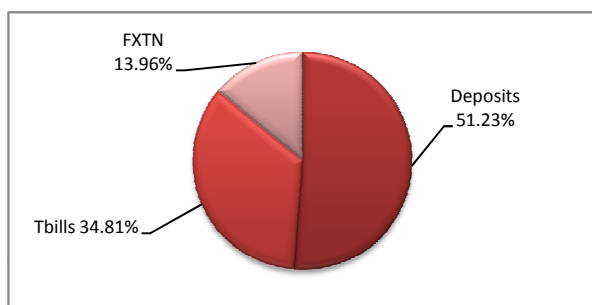


Cumulative Performance (%)

Period	1 Mo	6 Mos	YTD	1 Yr	3 Yrs	5 Yrs	Since Inception
Fund	0.440%	2.331%	2.321%	3.735%	6.951%	9.671%	10.152%
Benchmark	0.322%	2.201%	2.189%	3.921%	7.715%	10.719%	11.185%

Note: Rates are net of tax

Portfolio Composition



NAVPU¹ since inception

Highest	110.152301
Lowest	100.000000

¹Net of fees and taxes.

Statistics

Weighted Modified Duration	0.31
Volatility, Past 1 Year*	0.33%
Sharpe Ratio**	-0.48
Information Ratio***	-0.28

*Volatility measures the degree to which the Fund fluctuates vis-à-vis its average return over a period of time.

**Sharpe Ratio is used to characterize how well the return of a Fund compensates the investor for the level of risk taken. The higher the number, the better.

*** Information Ratio measures reward-to-risk efficiency of the portfolio relative to the benchmark. The higher the number, the higher the reward per unit of risk.

TOP HOLDINGS:

Name	% of Fund
FXTN	13.91%
Deposits-Other Bank	12.10%
TBILLS	8.87%
Deposits-Other Bank	6.51%
Deposits-Other Bank	6.05%
Deposits-Own Bank	5.58%

OTHER DISCLOSURES

1) RELATED PARTY TRANSACTIONS

The Fund has deposits with the Bank Proper amounting to Php 143,444,867.89, which were approved by the Trust Committee. Likewise, all related parties transactions are conducted on an arm's length basis.

2) LIST OF PROSPECTIVE INVESTMENTS

The following are among the Fund's approved investment outlets, wherein the Trustee intends to invest depending on strategy, availability, or other market-driven circumstances:

- Bank deposits and such other investments allowed under regulations issued by the BSP.
- Tradable fixed-income instruments issued or guaranteed by the Philippine government or the BSP.
- Tradable fixed-income instruments issued by financial institutions or private corporations; exchange-listed securities; marketable instruments that are traded in an organized exchange; loans traded in an organized market; and such other tradable investment outlets/categories as the BSP may allow.

OUTLOOK AND STRATEGY

The fund increased its duration to 0.31 in June from 0.27 the previous month after the purchase of 1-yr treasury bills to lock in higher yields. As at end June 2019, the fund's absolute performance was as at 0.44% month-on-month and 2.32% year-to-date, outperforming its benchmark by 11.8 bps and 13.2 bps respectively. With the lower month-on-month inflation in June, the recent Reserve Requirement cuts, and the dovish statements of BSP Gov. Diokno, rates are expected to go down. Given this expectation, the fund will continue to opportunistically purchase treasury bills and seek higher yielding deposits.

Supervised by the Bangko Sentral ng Pilipinas. BSP contact details: (02) 708-7087 | consumeraffairs@bsp.gov.ph
 Customer Complaints, Concerns and Other Queries - In case of complaints, concerns and other queries regarding PSBank Trust Division Products and Services, the Client may contact the Bank's 24/7 Customer Experience Hotline at (02) 845-8888; text (63 998-8458888; e-mail at customerexperience@psbank.com.ph or call BSP Financial Consumer Department at Tel. No. 708-7087.